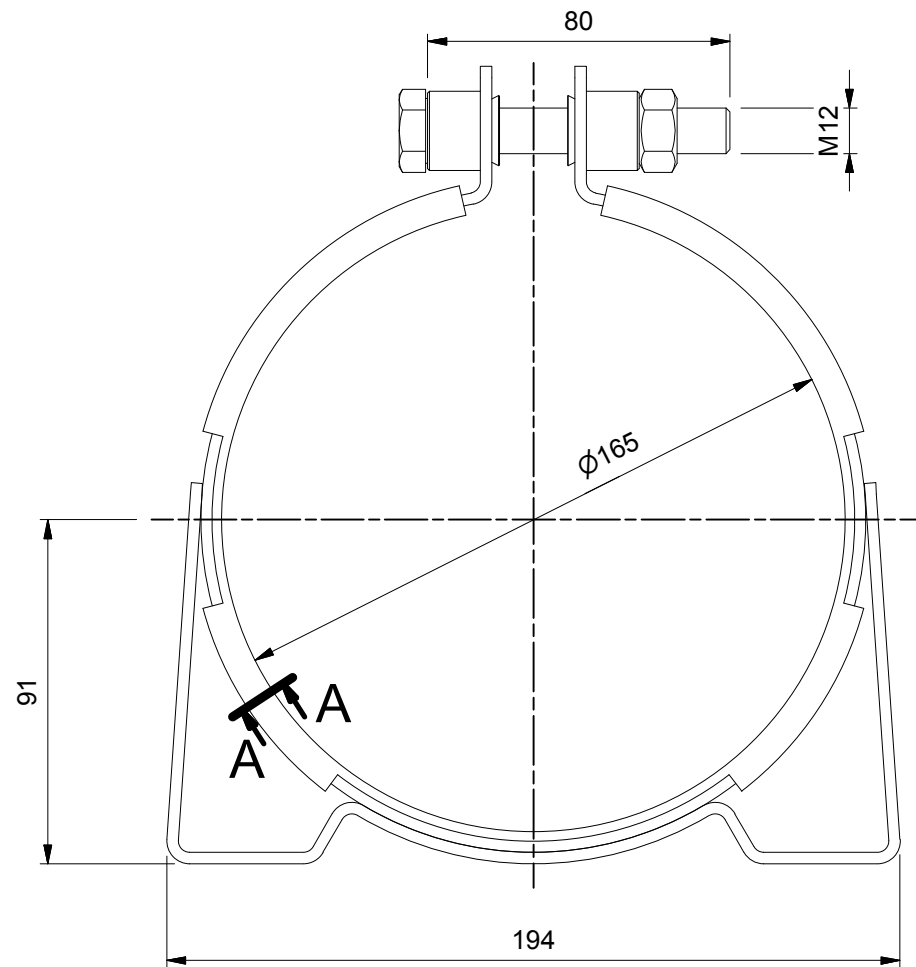
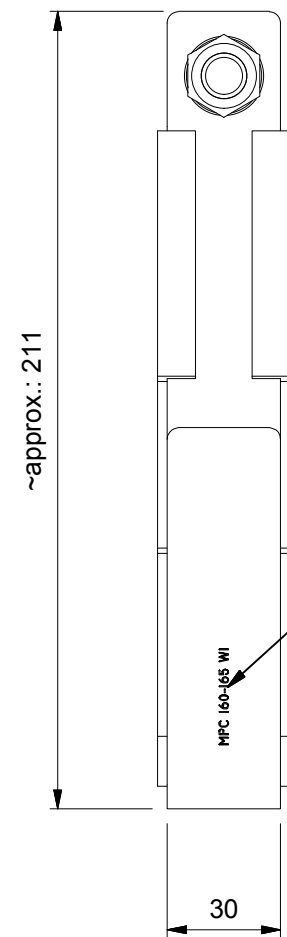


Front view (1 : 2)

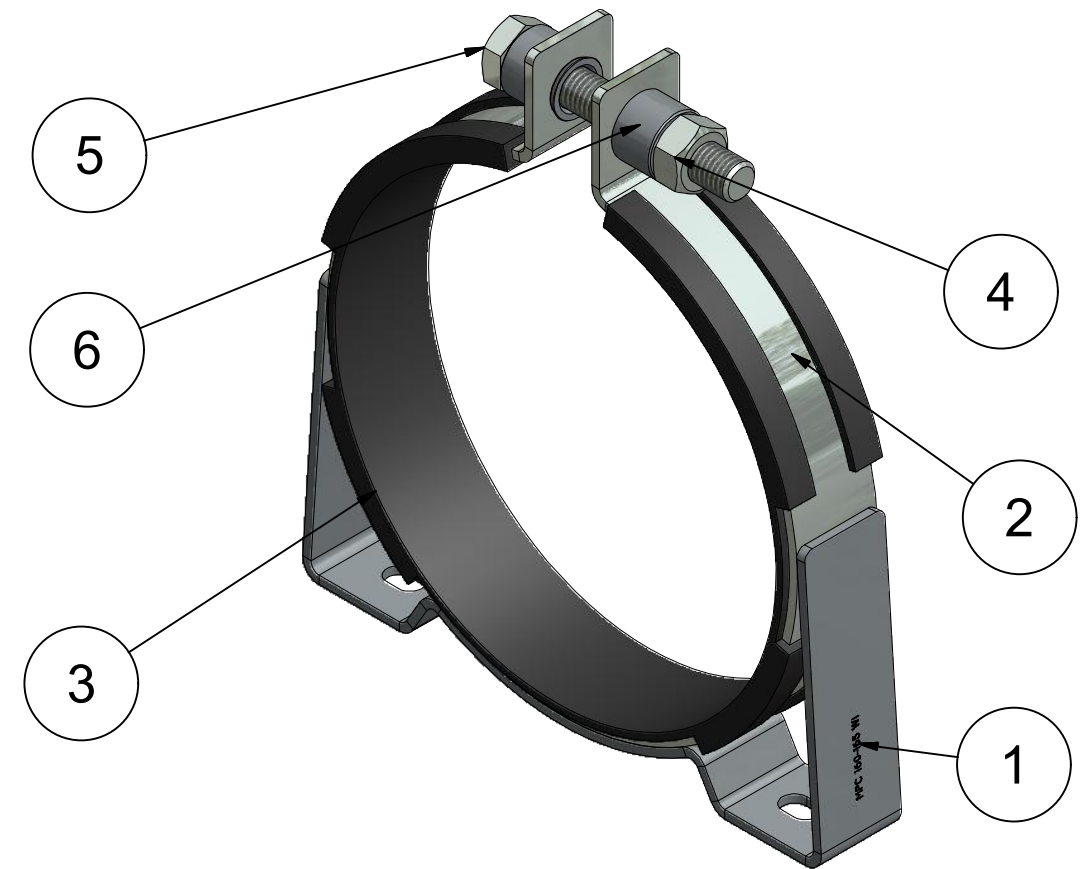


Side view (1 : 2)



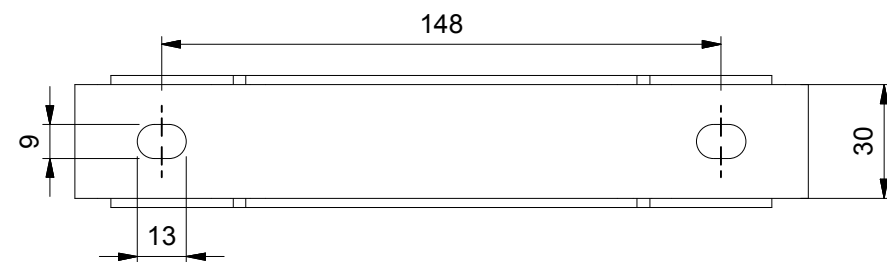
Product marking

Parts identification (1 : 2)

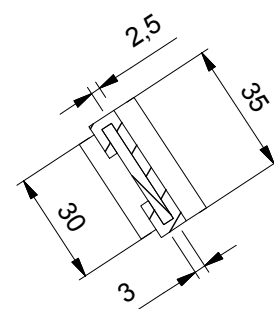


Item	Qty	Description	Material
1	1	Console part	Zinc plated, Steel, Mild
2	1	Clamp part	Zinc plated, Steel, Mild
3	1	Rubber part	EPDM Rubber Shore hardness 65°±5°
4	1	NUT M12, DIN 934	Zinc plated, ST 8.8
5	1	Screw DIN 933 M12*80 full threaded	Zinc plated, ST 8.8
6	2	Rivet Ø21	Zinc plated, Steel, Mild

Bottom view (1 : 2)


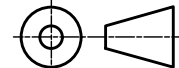


A-A (1 : 2)



NOTICE TO PERSONS RECEIVING THIS DRAWING AND/OR TECHNICAL INFORMATION:
MPC Industries BV claims proprietary rights to the material disclosed hereon. This drawing and/or technical information is issued in confidence for engineering information only and may not be reproduced or used to manufacture anything shown or referred to hereon without direct written permission from MPC Industries BV to the user. This drawing and/or technical information is the property of MPC Industries BV and is loaned for mutual assistance to be returned when its purpose has been served.
THIS DRAWING AND/OR TECHNICAL INFORMATION IS THE PROPERTY OF MPC INDUSTRIES BV

Product mark: MPC 160-165 W1

Rev.		Date	Description	AUTHOR
		Revision history		
-	18-4-2013	Drawing created		Gyula
1	3-1-2014	Drawing renewed		gyula
Material:		Dimensions: -		
Doc no.: ACCU1160.dwg		Third angle projection:		
				
Part number:		ACCU1160		
Description:		MPC Industries Accumulator clamp, 160-165mm, W1		
Revision:		1		
Format:		A3		
Drawn by:	gyula	Creation date:	18-4-2013	
Checked by:		Checked date:		
Scale:	1:2	Units:	mm	
Status:	Released			
MPC Industries B. V. Badweg 38 8401 BL Gorredijk Postbus 225 8400 AE Gorredijk. Tel.: . 0513 465477 Fax.: 0513 465736				