

Product mark:  
MPC JAL 2150G

Item	Qty	PART NUMBER	Description	STOCK NUMBER	Material	Sum of Length
1	1	CB-MPCACCU150-W1	Lower clamp part	XPLAT30x3	DC01 C390	293 mm
2	1	CT-MPCACCU150-W1	Upper clamp part	XPLAT30x3	DC01 C390	293 mm
3	1	K-MPCACCU150-W1	Console part	XPLAT30x3	DC01 C390	300 mm
4	4	OAA-21017135M-01	Rivet Bushing Ø21	XPROPACCUW1	11SMnPb30 / 1.0718	
5	2	OBA-12800088M-00	DIN 933 - M12x80 Sk.8	XBOUTM12x80	Steel, Galvanized	
6	2	OMA-12000080M-00	DIN 934 - M12 Sk.8	XMOERM12	Steel, Galvanized	
7	2	RB-MPCACCU150	Bottom rubber part	XRUBBER30x3	EPDM Shore 65°±5°	70 mm
8	1	RT-MPCACCU150	Top rubber part	XRUBBER30x3	EPDM Shore 65°±5°	220 mm



© 2017 MPC INDUSTRIES BV, developed and designed by MPC INDUSTRIES BV

General Tolerances: according to: DIN 2768-vL

SURFACE TREATMENT AND OR PROTECTION:

Zinc plated  
DIN50961: Fe/Zn 8-12µm

**Commercial  
Drawing**

NOTICE TO PERSONS RECEIVING THIS DRAWING AND/OR TECHNICAL INFORMATION:  
MPC Industries BV claims proprietary rights to the material disclosed hereon. This drawing and/or technical information is issued in confidence for engineering information only and may not be reproduced or used to manufacture anything shown or referred to hereon without direct written permission from MPC Industries BV to the user. This drawing and/or technical information is the property of MPC Industries BV and is loaned for mutual assistance to be returned when its purpose has been served.  
THIS DRAWING AND/OR TECHNICAL INFORMATION IS THE PROPERTY OF MPC INDUSTRIES BV  
DO NOT SCALE FROM DRAWING.

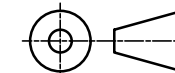
Material: ACCU150

Mass: 0,957 kg

Filename: ACCU150.dwg

Sheet: 1 / 2

Third angle projection:



Part number:

**ACCU150**

Drawn by: G. Kardos

Creation date: 22/11/2011

Checked by: M. Wiersma

Checked date: 25/04/2012

Scale 1 : 2

Units: mm

Status: Released

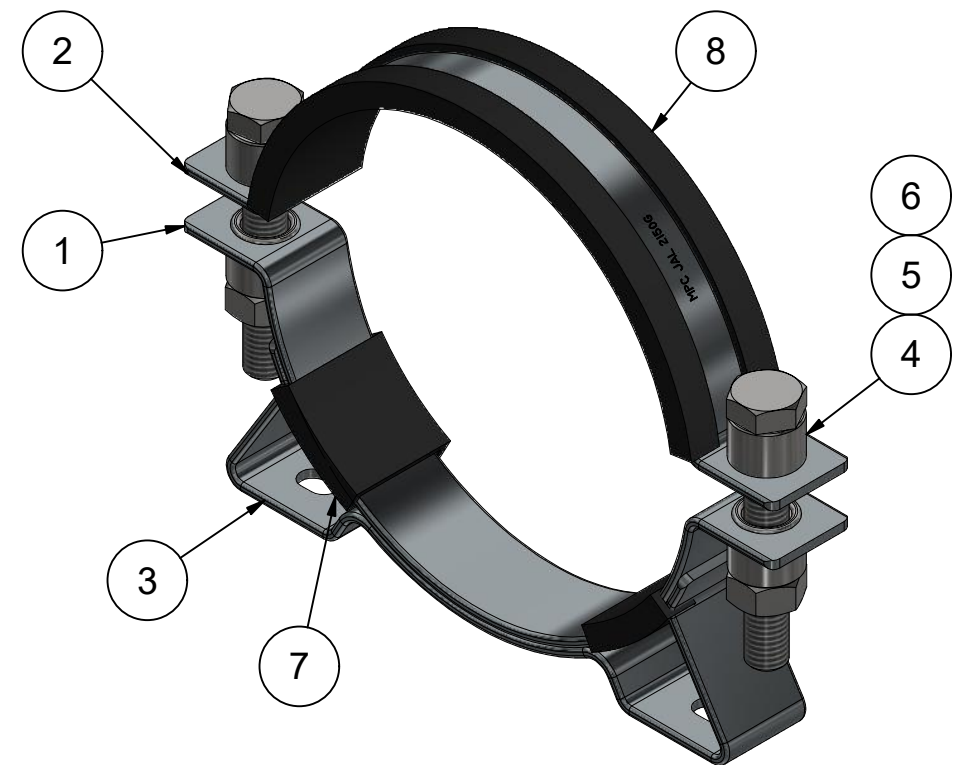
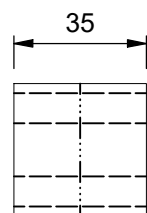
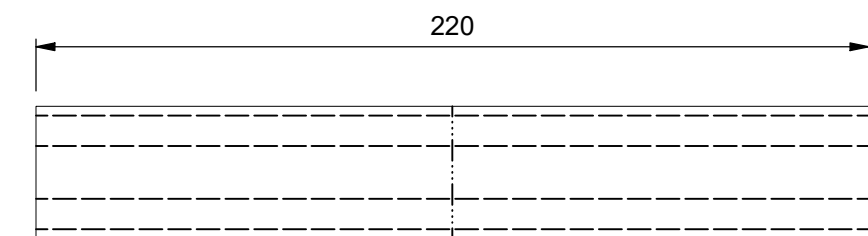
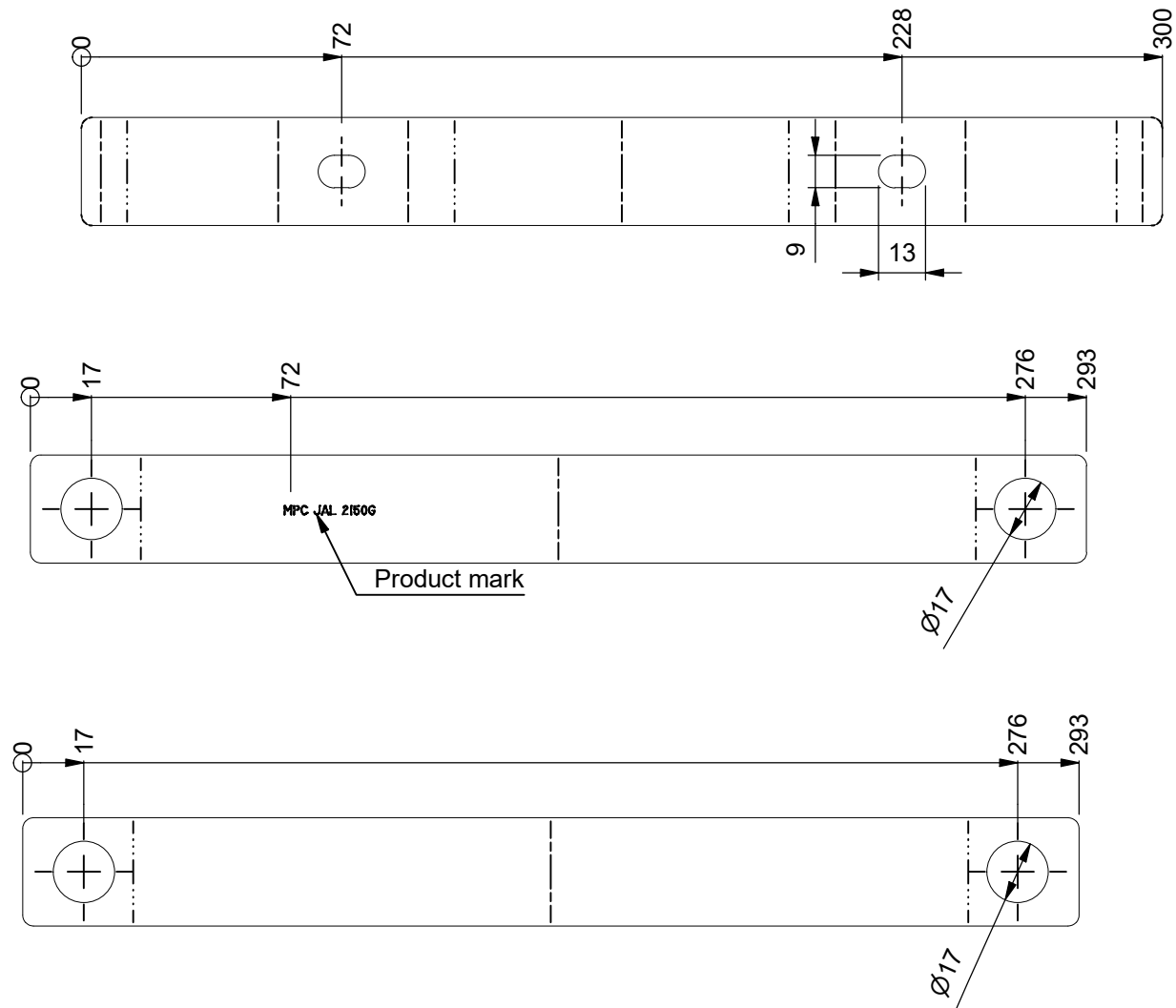
Description:  
MPC Industries Accumulator clamp,  
145-152mm, W1

Revision:

**C**

Format:

**A3**



Notes:

- Product mark: MPC JAL 2150G
- Production with mould 3

Item	Qty	PART NUMBER	Description	STOCK NUMBER	Material	Sum of Length
1	1	CB-MPCACCU150-W1	Lower clamp part	XPLAT30x3	DC01 C390	293 mm
2	1	CT-MPCACCU150-W1	Upper clamp part	XPLAT30x3	DC01 C390	293 mm
3	1	K-MPCACCU150-W1	Console part	XPLAT30x3	DC01 C390	300 mm
4	4	OAA-21017135M-01	Rivet Bushing Ø21	XPROPACCUW1	11SMnPb30 / 1.0718	
5	2	OBA-12800088M-00	DIN 933 - M12x80 Sk 8.8	XBOUTM12x80	Steel, Galvanized	
6	2	OMA-12000080M-00	DIN 934 - M12 Sk.8	XMOERM12	Steel, Galvanized	
7	2	RB-MPCACCU150	Bottom rubber part	XRUBBER30x3	EPDM Shore 65°±5°	70 mm
8	1	RT-MPCACCU150	Top rubber part	XRUBBER30x3	EPDM Shore 65°±5°	220 mm



© 2017 MPC INDUSTRIES BV, developed and designed by MPC INDUSTRIES BV

General Tolerances: according to: DIN 2768-vL  
 SURFACE TREATMENT AND OR PROTECTION:  
 Zinc plated  
 DIN50961: Fe/Zn 8-12µm

**Production Drawing**

NOTICE TO PERSONS RECEIVING THIS DRAWING AND/OR TECHNICAL INFORMATION:  
 MPC Industries BV claims proprietary rights to the material disclosed hereon. This drawing and/or technical information is issued in confidence for engineering information only and may not be reproduced or used to manufacture anything shown or referred to hereon without direct written permission from MPC Industries BV to the user. This drawing and/or technical information is the property of MPC Industries BV and is loaned for mutual assistance to be returned when its purpose has been served.  
 THIS DRAWING AND/OR TECHNICAL INFORMATION IS THE PROPERTY OF MPC INDUSTRIES BV  
 DO NOT SCALE FROM DRAWING.

Material: ACCU150  
 Mass: 0,957 kg  
 Filename: ACCU150.dwg  
 Sheet: 2 / 2  
 Part number:  
**ACCU150**

Drawn by: G. Kardos  
 Creation date: 22/11/2011  
 Checked by: M. Wiersma  
 Checked date: 25/04/2012  
 Scale 1 : 2  
 Units: mm  
 Status: Released

Description:  
 MPC Industries Accumulator clamp,  
 145-152mm, W1  
 Revision:  
**C**  
 Format:  
**A3**

Rev.	Date	Description	DESIGNER
C	01/11/2019	Added MPC to product Marking	M. Wiersma
B	31/01/2019	Drawing renewed and changed according to production	C.P. Dijkstra
A	6-1-2014	Drawing renewed	G. Kardos