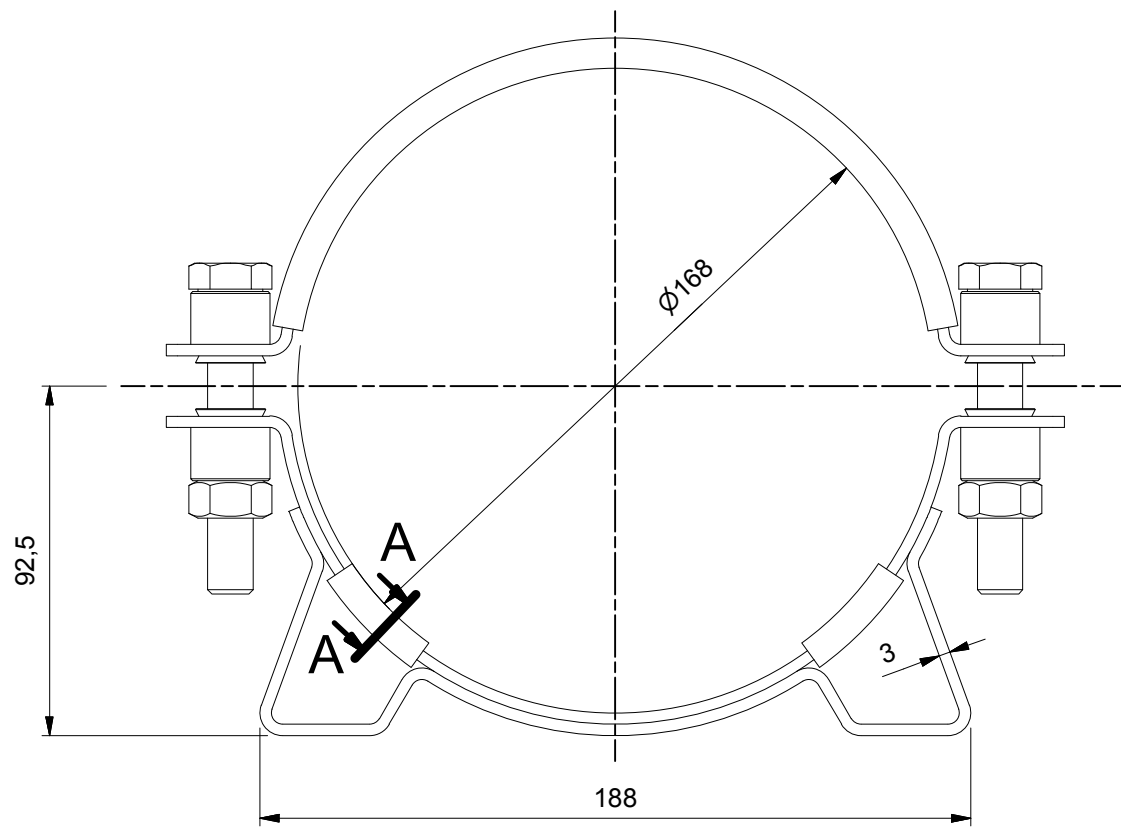
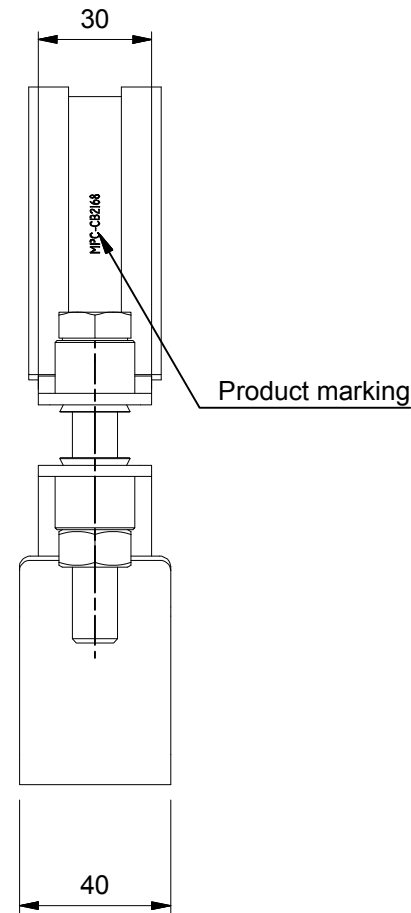


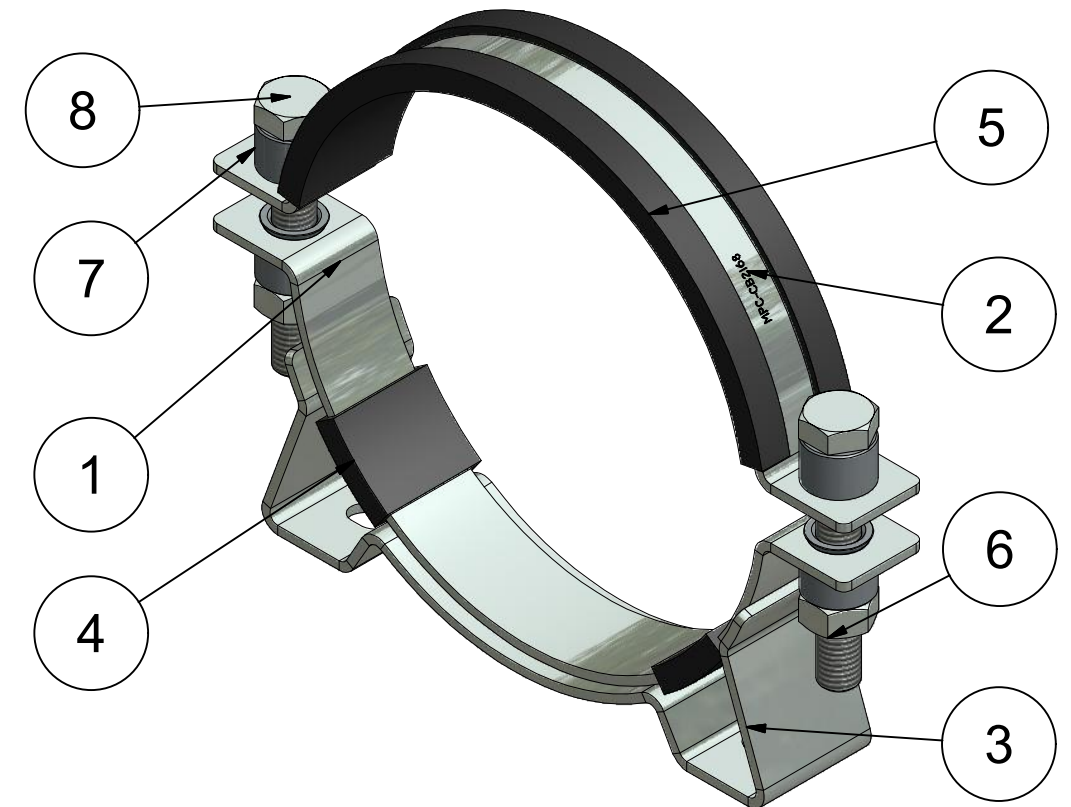
Front view (1 : 2)



Side view (1 : 2)

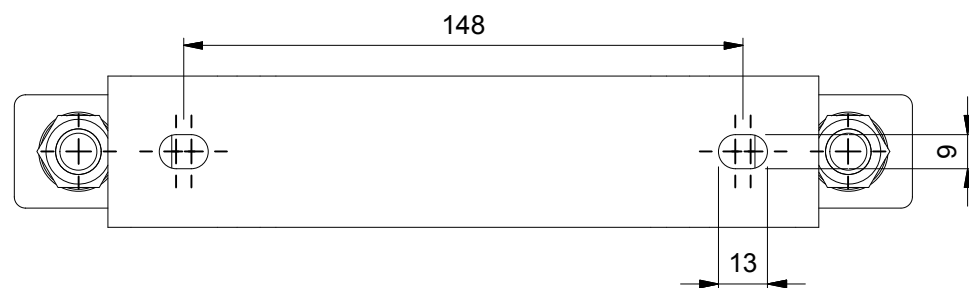


Parts identification (1 : 2)

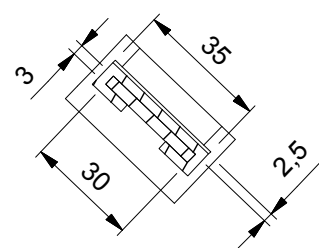


| Item | Qty | Description | Material |
|------|-----|------------------------------------|-----------------------------------|
| 1 | 1 | Lower clamp part | Zinc plated Steel, Mild |
| 2 | 1 | Upper clamp part | Zinc plated Steel, Mild |
| 3 | 1 | Console part | Zinc plated Steel, Mild |
| 4 | 2 | Lower rubber part | EPDM Rubber Shore hardness 65°±5° |
| 5 | 1 | Upper rubber part | EPDM Rubber Shore hardness 65°±5° |
| 6 | 2 | NUT M12, DIN 934 | Zinc plated, ST 8.8 |
| 7 | 4 | Rivet Ø21 | Zinc plated, Steel, Mild |
| 8 | 2 | Screw DIN 933 M12*80 full threaded | Zinc plated, ST 8.8 |

Bottom view (1 : 2)



A-A (1 : 2)



Product mark:
MPC-CB2168

| Revision history | | | |
|------------------|------------|--------------------------|--------|
| Rev. | Date | Description | AUTHOR |
| - | 22-10-2004 | Drawing created | Martin |
| 1 | 25-1-2012 | Inventor drawing created | gyula |
| 2 | 14-1-2014 | Drawing refreshed | gyula |



| | |
|-------------------------|---|
| Material: | Dimensions: - |
| Doc no.: ACCUT21168.dwg | Part number: ACCUT21168 |
| Third angle projection: | Description: MPC Industries Accumulator clamp, 168mm, W1 |

| | | |
|------------------|--------------------------|--------------------|
| Drawn by: gyula | Creation date: 25-1-2012 | Revision: 2 |
| Checked by: | Checked date: | Format: A3 |
| Scale: 1:2 | Units: mm | |
| Status: Released | | |

NOTICE TO PERSONS RECEIVING THIS DRAWING AND/OR TECHNICAL INFORMATION:
MPC Industries BV claims proprietary rights to the material disclosed hereon. This drawing and/or technical information is issued in confidence for engineering information only and may not be reproduced or used to manufacture anything shown or referred to hereon without direct written permission from MPC Industries BV to the user. This drawing and/or technical information is the property of MPC Industries BV and is loaned for mutual assistance to be returned when its purpose has been served.
THIS DRAWING AND/OR TECHNICAL INFORMATION IS THE PROPERTY OF MPC INDUSTRIES BV