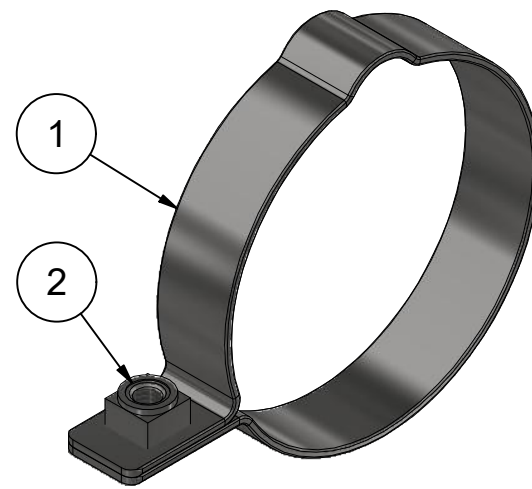
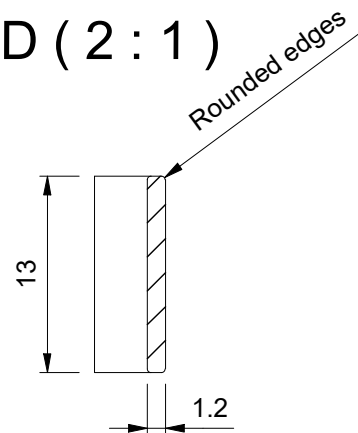
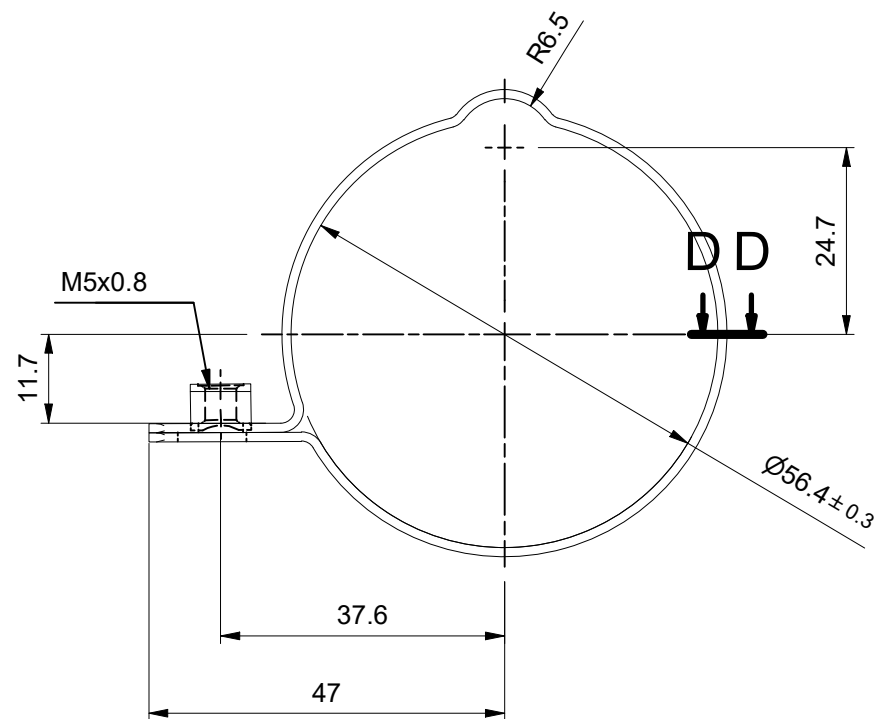
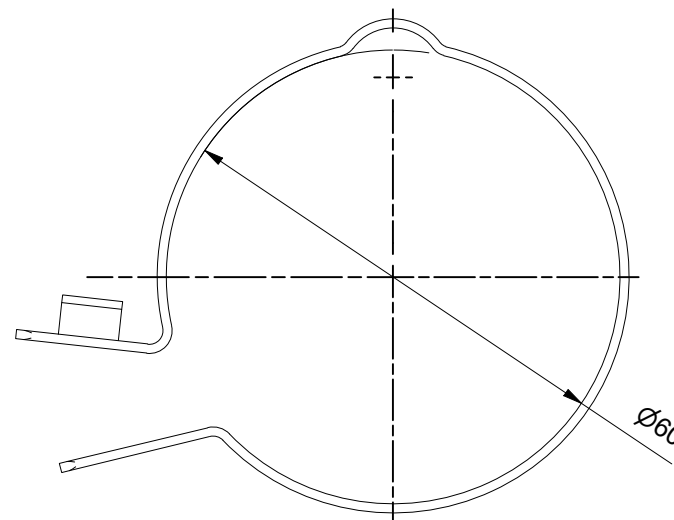


D-D (2 : 1)

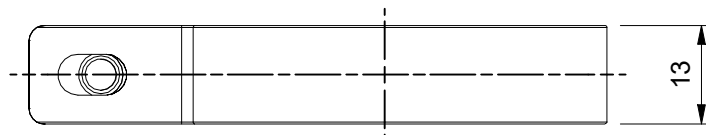


Delivery shape (1 : 1)



NOTE(S):

1. ALL TOLERANCES TO THE TABLE DETAILED BELOW
STANDARD TOLERANCE FOR BLANKING/PUNCHING OF METALPARTS (NOT ACROSS BENDS)
DIMENSION TOLERANCE
<30 ±0,2
30<120 ±0,3
2. STANDARD TOLERANCE FOR DIMENSIONS ACROSS BENDS/FORMED PARTS:
DIMENSION TOLERANCE
<30 ±0,4
30<120 ±0,7
3. STANDARD TOLERANCE FOR PUNCHED HOLES:
DIMENSION TOLERANCE
<30 ±0,4
30<120 ±0,7
4. GENERAL ANGULAR TOLERANCE ±1.
5. ALL DIMENSIONS ARE TO INTERSECTIONS UNLESS OTHERWISE STATED AND APPLY TO FINISHED COMPONENT.
6. REMOVE ALL BURRS AND SHARP EDGES.
7. COMPONENT MUST CONFORM TO TRIUMPH STANDARD S6060-19 SECTION 8.3 (1:L2)
8. ALL RADII AS BELOW UNLESS OTHERWISE STATED:
- INTERNAL BEND RADII 1,8 ±2
- CORNER RADII 2,0 ±0,5
9. ALL COLLARLESS WELD NUTS TO BE AS DEFINED BELOW:
- JIS B1196:2010 SQUARE WELD NUT, TYPE ID, M5X0,8 4MM THICK
- WELD NUT MECHANICAL PROPERTIES TO JISB1196:2010 STRENGTH 5T.
- WELD NUT TO WITHSTAND A DIRECT APPLIED TEST TORQUE OF 12,7Nm ACCORDING TO JIS B1196:2010
- FOR ANGULAR ORIENTATION OF WELD NUT, SEE DIMENSION 90° ±5°
10. CALCULATED MASS 0.03 KG
11. MATERIAL IS COILED BAND WITH ROUNDED EDGES (SEE D-D)
12. ALL THREADS MUST CONFORM TO STANDARD THREAD LIMIT PLUG GAUGE 6H, M5 TO DIN 13
INTERNAL IN THE SUPPLIED CONDITION. MASKING OR RE-CUTTING PERMITTED.
13. DRAWING DIMENSIONS APPLY WHEN PART IS CLAMPED USING M5X0,8 FASTENER.
14. CLAMPED CONDITION DIMENSIONS SHOWN. IN FREE CONDITION COMPONENT MUST CLEAR A Ø60MM CYLINDER. (SEE VIEW DELIVERY SHAPE)
15. PACKAGED TO STANDARD S8020-6



Item	Qty	PART NUMBER	Description	STOCK NUMBER	Material	Sum of Length
1	1	CFD-12056060A-01	Clamp Band	CFD-12056060A-01	AISI 304	221 mm
2	1	OWD-05000020A	Square weld nuts JIS B 1196:2010 M5 aisi 304	OWD-05000020A	AISI 304	

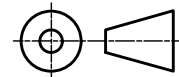


© 2017 MPC INDUSTRIES BV, developed and designed by MPC INDUSTRIES BV

General Tolerances: according to: DIN 2768-vL
SURFACE TREATMENT AND OR PROTECTION:

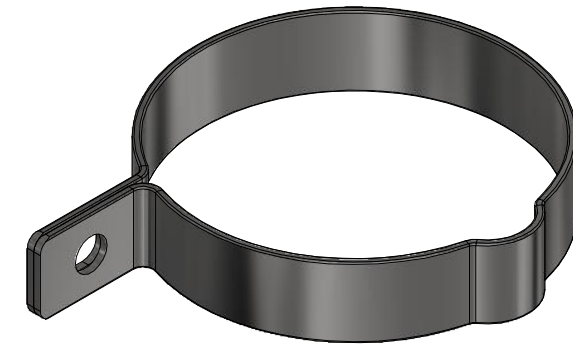
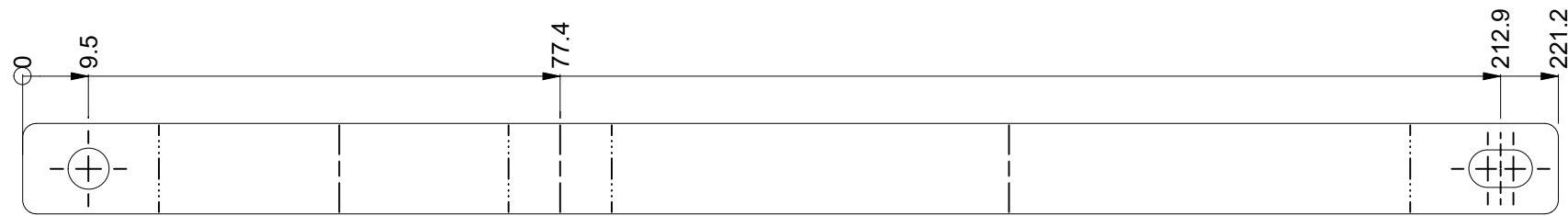
NOTICE TO PERSONS RECEIVING THIS DRAWING AND/OR TECHNICAL INFORMATION:
MPC Industries BV claims proprietary rights to the material disclosed hereon. This drawing and/or technical information is issued in confidence for engineering information only and may not be reproduced or used to manufacture anything shown or referred to hereon without direct written permission from MPC Industries BV to the user. This drawing and/or technical information is the property of MPC Industries BV and is loaned for mutual assistance to be returned when its purpose has been served.
THIS DRAWING AND/OR TECHNICAL INFORMATION IS THE PROPERTY OF MPC INDUSTRIES BV
DO NOT SCALE FROM DRAWING.

Material: Art.No: PR013484 Mass: 0,029 kg
Filename: CFD-12056060A-00.dwg Sheet: 1 / 2

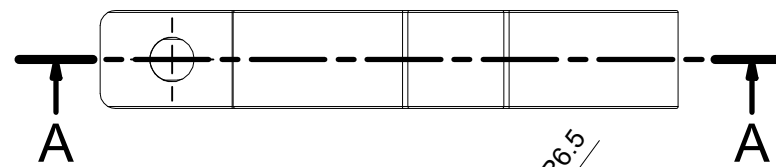
Third angle projection:  Part number: **CFD-12056060A-00**

Drawn by: M. Wiersma Creation date: 24/07/2019
Checked by: Customer Checked date: 30/08/2019
Scale 1 : 1 Units: mm
Status: Released
Description: MPC Clip for Brake Hose
Revision: A
Format: A3

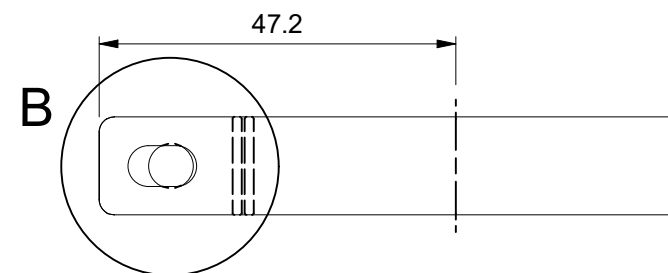
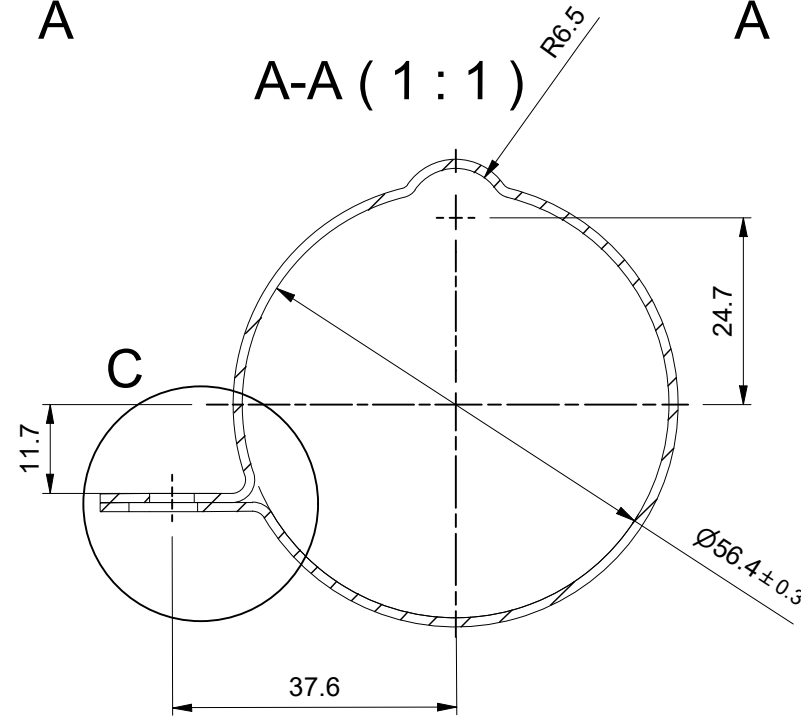
Rev.	Datum	Omschrijving	ENGINEER
A	30/08/2019	First release for proto typing. Prototype order customer	M. Wiersma
Revisie overzicht			



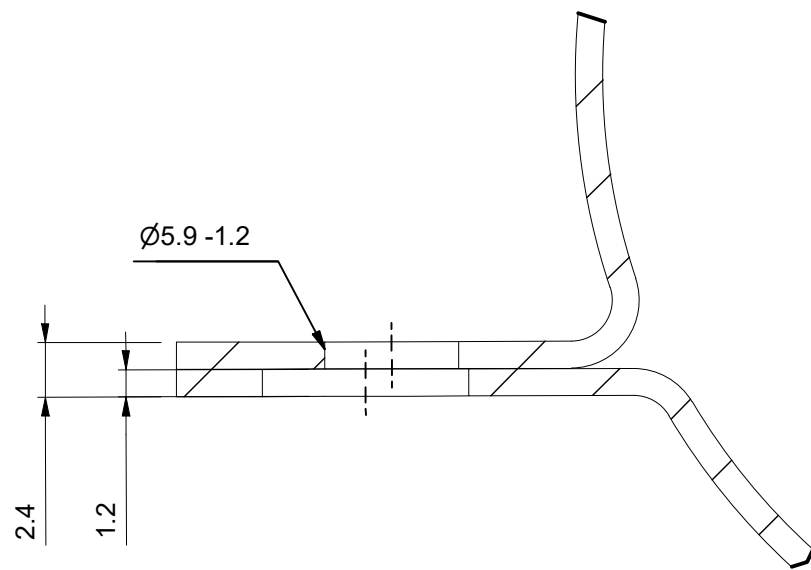
C (3:1)



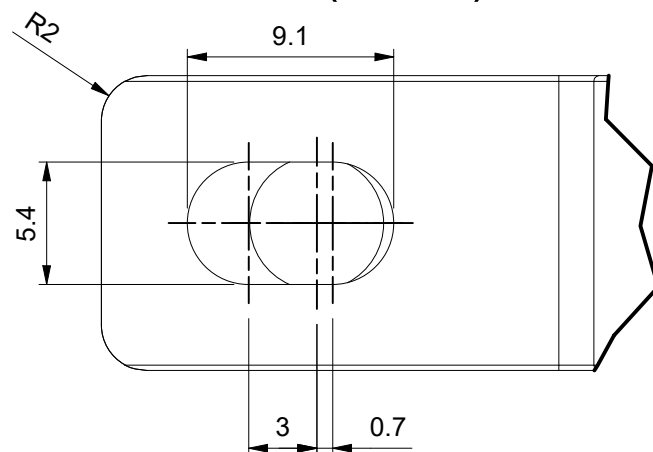
A-A (1:1)



B



B (3:1)



		© 2017 MPC INDUSTRIES BV, developed and designed by MPC INDUSTRIES BV	
		General Tolerances: according to: DIN 2768-vL	
<p>NOTICE TO PERSONS RECEIVING THIS DRAWING AND/OR TECHNICAL INFORMATION:</p> <p>MPC Industries BV claims proprietary rights to the material disclosed herein. This drawing and/or technical information is issued in confidence for engineering information only and may not be reproduced or used to manufacture anything shown or referred to hereon without direct written permission from MPC Industries BV to the user. This drawing and/or technical information is the property of MPC Industries BV and is loaned for mutual assistance to be returned when its purpose has been served.</p> <p>THIS DRAWING AND/OR TECHNICAL INFORMATION IS THE PROPERTY OF MPC INDUSTRIES BV.</p> <p>DO NOT SCALE FROM DRAWING.</p>		SURFACE TREATMENT AND OR PROTECTION:	
		Material: AISI 304	Art.No: CFD-12056060A-01
Filename: CFD-12056060A-00.dwg		Sheet: 2 / 2	
Third angle projection:		Part number:	
		CFD-12056060A-01	
Drawn by: M. Wiersma	Creation date: 24/07/2019	Description: Clamp Band	
Checked by: Customer	Checked date: 30/08/2019		
Scale 1 : 1	Units: mm	Revision: A Format: A3	
Status: Released			
MPC Industries B. V. Badweg 38 8401 BL Gorredijk Postbus 225 8400 AE Gorredijk. Tel.: . 0513 465477 Fax.: 0513 465736			