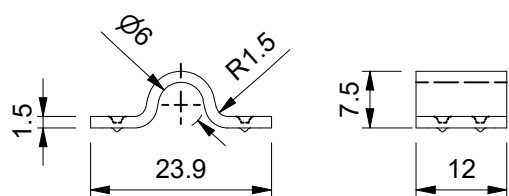


Bridge (1 : 1)



© 2017 MPC INDUSTRIES BV, developed and designed by MPC INDUSTRIES BV

General Tolerances: according to: DIN 2768-vL
SURFACE TREATMENT AND OR PROTECTION:

**Commercial
Drawing**

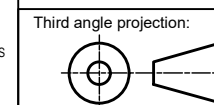
NOTICE TO PERSONS RECEIVING THIS DRAWING AND/OR TECHNICAL INFORMATION:
MPC Industries BV claims proprietary rights to the material disclosed hereon. This drawing and/or technical information is issued in confidence for engineering information only and may not be reproduced or used to manufacture anything shown or referred to hereon without direct written permission from MPC Industries BV to the user. This drawing and/or technical information is the property of MPC Industries BV and is loaned for mutual assistance to be returned when its purpose has been served.
THIS DRAWING AND/OR TECHNICAL INFORMATION IS THE PROPERTY OF MPC INDUSTRIES BV.
DO NOT SCALE FROM DRAWING.

Material: D4050BR

Mass: 0,032 kg

Filename: D4050BR.dwg

Sheet: 1 / 1



Part number:
D4050BR

Drawn by: C.P. Dijkstra

Creation date: 18/07/2018

Checked by: M. Wiersma

Checked date: 18/07/2018

Scale 1 : 1

Units: mm

Status: Released

Description:
MPC Industries D clamp Ø50-Ø70 mm, in W4 with bridge for spiralhose with right winded reinforcement.

Revision:

Format:
A3