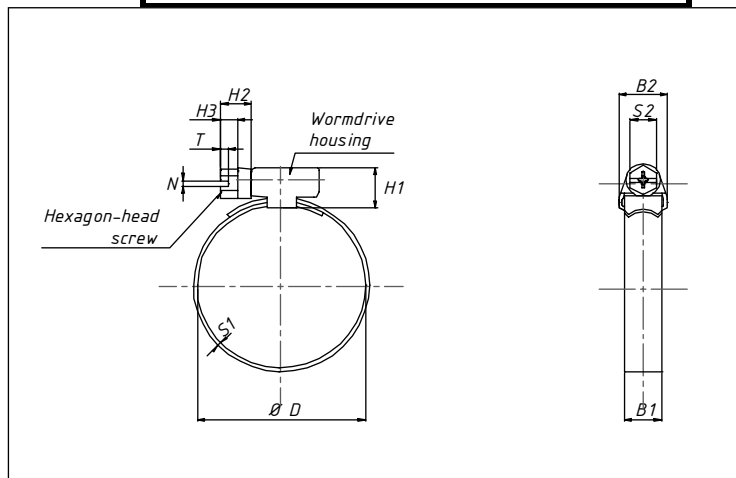


MPCD032DAC



CLAMPING RANGE: <i>D</i>	BAND WIDTH: <i>B1</i> +/-1	BAND THICKNESS: <i>S1</i>	WORMDRIVE HOUSING		HEXAGON HEAD SCREW					TIGHTENING TORQUE: <i>AD</i> *	BREAKING TORQUE: <i>PD</i> **
			<i>B2</i> max.	<i>H1</i> max	<i>H2</i> +/-0,3	<i>H3</i> min	<i>N</i> +0,3-0,6	<i>S2</i> <i>H13</i>	<i>T</i> +/-0,3		
32-50	9	0,5 till 1	14	14	8	4	1,2	7	1,6	3,0Nm	4,0Nm
AD*= Maximum advised torque.				PD**= Minimum test torque in Nm according to DIN 3017-1.							
Material code		Hexagon head screw		Wormdrive housing				Band			
W1 DACROMET coated		Steel, DACROMET coated.		Steel with minimum tensile strength of 400 N/mm2 (1) aisi 430 or higher) DACROMET coated.							

The corrosion resistance of the MPCD032DAC must be 400-120 hours salt spray test till white rust, and 500-800 hours till red rust.

Tel. 0031/513-465477

Fax 0031/513-465736, sales 0031/513-462976

E-mail: info@mpc-clamps.com

<http://www.mpc-clamps.com>

Jalmarson-MPC

Badweg 56, NL-8401 BL GORREDIJK

P.O. Box 225, NL-8400 AE GORREDIJK

The Netherlands

