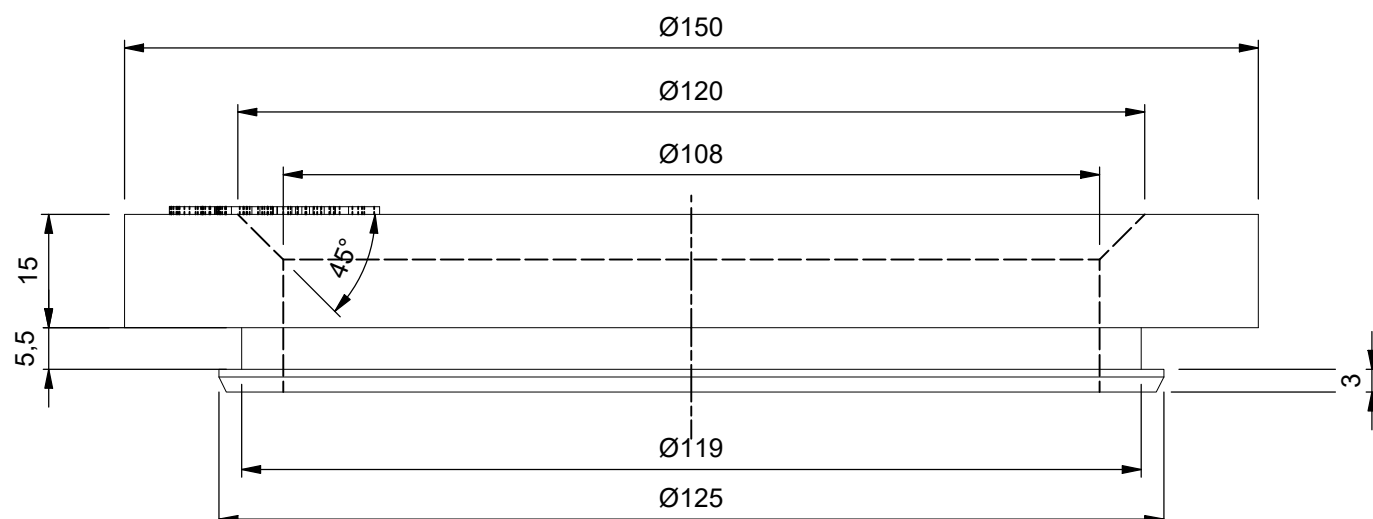



VIEW1 (1 : 1)



Iso view (1 : 1)



Revision history			
Rev.	Date	Description	DESIGNER
A	19-9-2017	Changed profile	M. Wiersma
B	8-11-2017	Added Brand name to the part	M. Wiersma

	© 2017 MPC INDUSTRIES BV, developed and designed by MPC INDUSTRIES BV	
	General Tolerances: according to: DIN 2768-vL	
SURFACE TREATMENT AND/OR PROTECTION:		
Material: NBR 80° Shore ±5°		Mass: 0,131 kg
Doc no.: R-1Mx.dwg		
<small>NOTICE TO PERSONS RECEIVING THIS DRAWING AND/OR TECHNICAL INFORMATION:</small> <small>MPC Industries BV claims proprietary rights to the material disclosed hereon. This drawing and/or technical information is issued in confidence for engineering information only and may not be reproduced or used to manufacture anything shown or referred to hereon without direct written permission from MPC Industries BV to the user. This drawing and/or technical information is the property of MPC Industries BV and is loaned for mutual assistance to be returned when its purpose has been served.</small> <small>THIS DRAWING AND/OR TECHNICAL INFORMATION IS THE PROPERTY OF MPC INDUSTRIES BV</small> <small>DO NOT SCALE FROM DRAWING.</small>		Part number: R-1Mx
Drawn by: Gy.Kardos Checked by: M. Wiersma Scale: 1:1 Status: Released	Creation date: 21/03/2017 Checked date: 19/09/2017 Units: mm	Description: Support Ring Revision: B Format: A3
<small>MPC Industries B. V. Badweg 38 8401 BL Gorredijk Postbus 225 8400 AE Gorredijk. Tel.: . 0513 465477 Fax.: 0513 465736</small>		